

Xintai Jiahe Biotech Co., Ltd

Address: No 1, Shidai Road, Xinwen Industry Park, Xintai City, Shandong Province,
P.R CHINA

Tel: 0538-5082009 Fax: 0538-5082111

<http://www.jiaheamino.com>

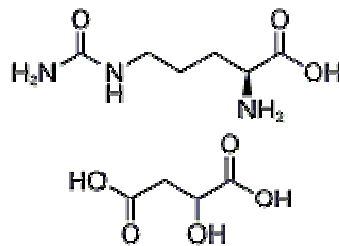
Update Date:2022/06/07

Specification

Product Name: L-CITRULLINE DL-MALATE 2:1

Molecular formula: C₁₀H₁₉N₃O₈

Molecular weight: 309.2732



Chemical Structure :

CAS No :54940-97-5

Test items	In-house Standard
Description	White crystals or crystalline powder
Specific rotation	+17.0°~ +19.0°
Chloride	≤0.05%
Iron	≤10ppm
Arsenic	≤0.5ppm
Heavy metals	≤10ppm
Lead	≤1ppm
Mercury	≤0.1ppm
Cadmium	≤0.5ppm
Loss on drying	≤0.20%
Residue on ignition	≤0.10%
L- Citrulline	62.5%~74.2%
DL-Malic acid	26.4%~36.4%
Aerobic Plate Count	≤1000CFU/g
Yeast&moulds	≤100 CFU/g
E. coli	Negative
Coliforms	Negative

Packing :25kg/carton

Transport regulations: Keep dry. Non dangerous cargo

Storage and handling: Tightly sealed, keep dry place

Term of validity:2 years

XINTAI JIAHE BIOTECH CO., LTD
新泰市佳禾生物科技有限公司