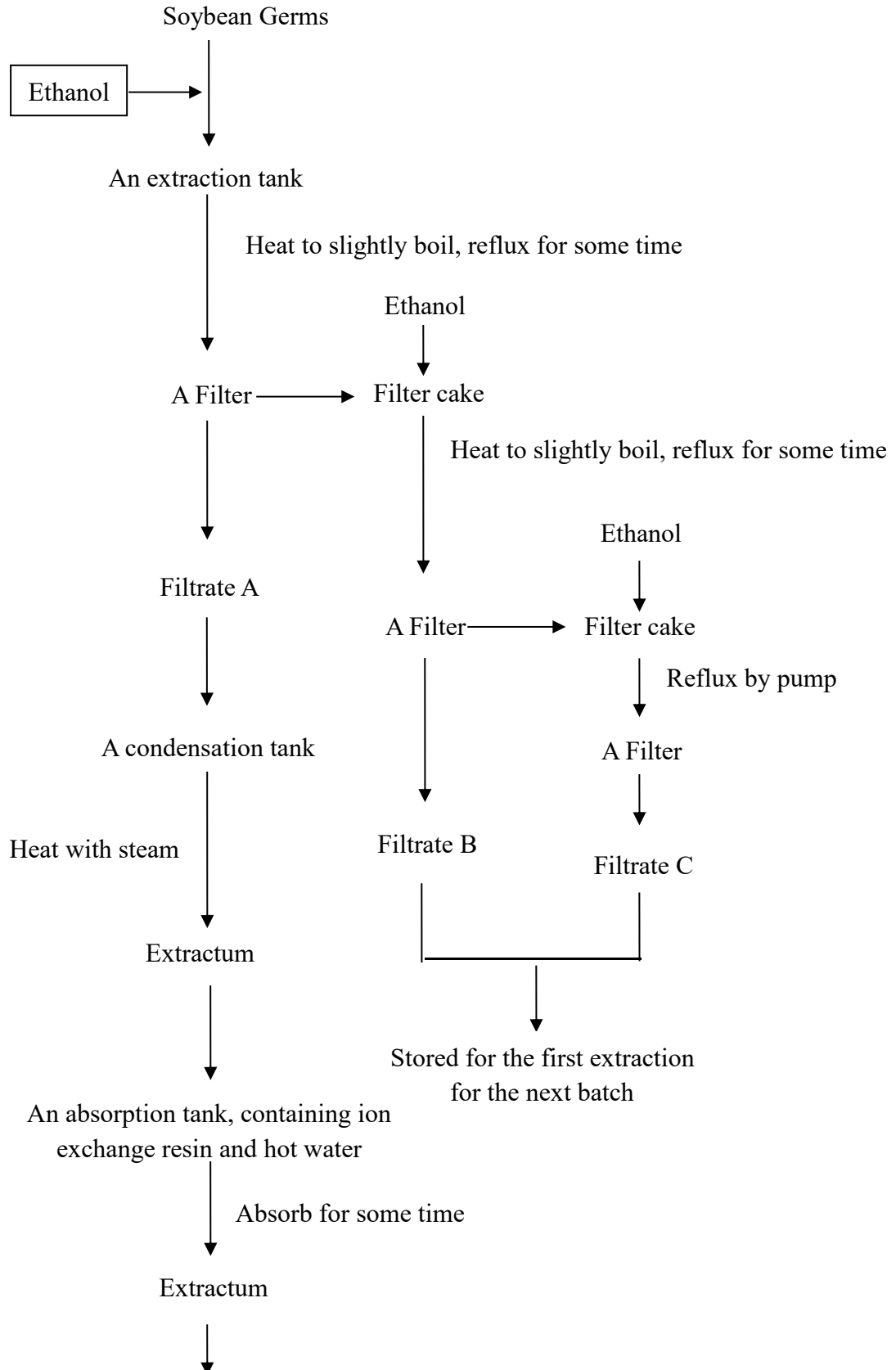


Flow chart for Soy Isoflavones



Another absorption tank, containing
ion exchange resin



Absorb for some time

Fill the two tanks of absorbed resin
to two corresponding columns



Wash the column with water



Elute with ethanol

Collect the elute liquor



Condense

Extractum



Crystallize



Centrifugate

Crystals



A desiccator



Soy isoflavones semi-product



Pulverize through 80 mesh sieve



Blend and Package
